



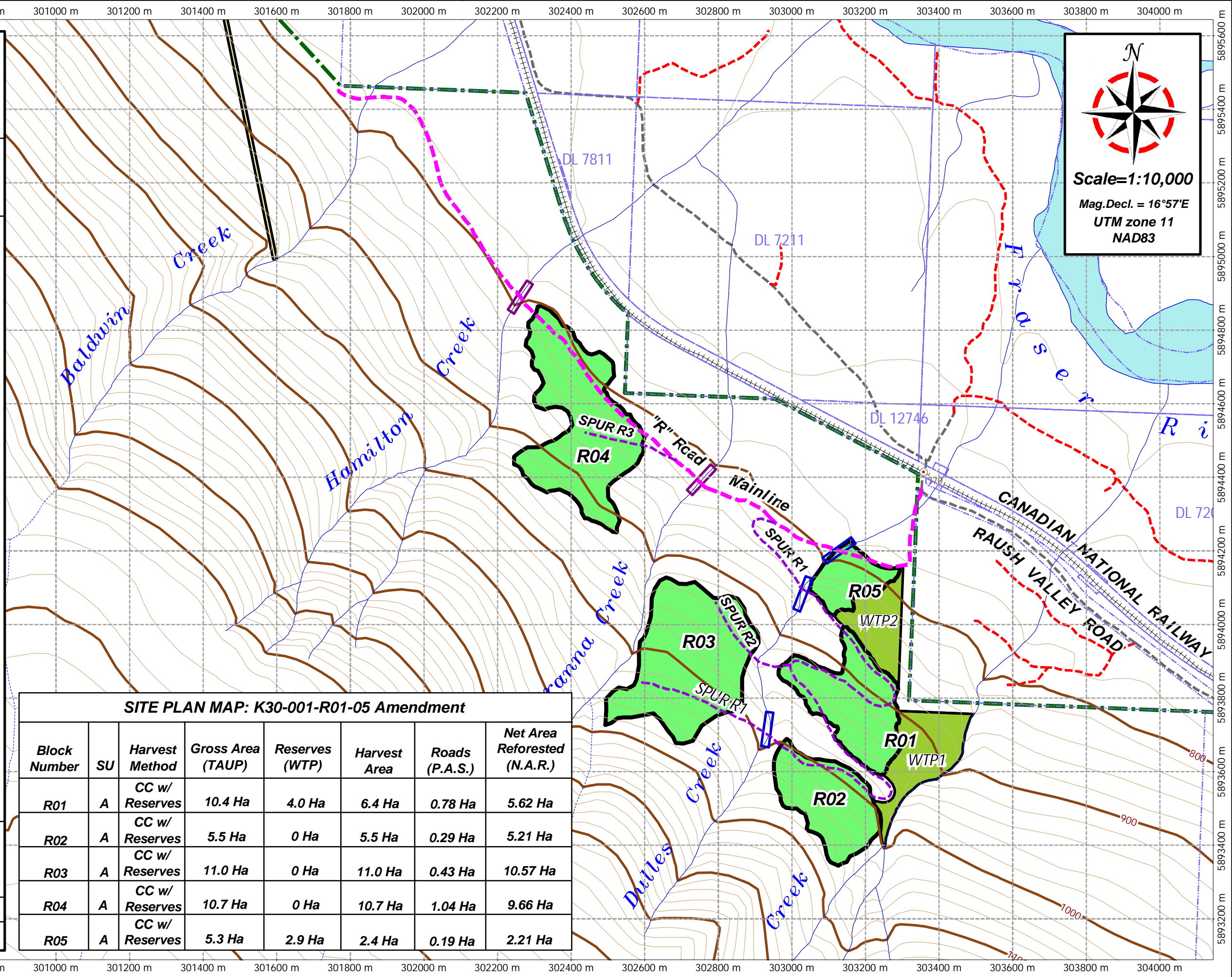
**DunsterCommunity  
Forest Society**  
P.O. Box 15  
Dunster, British Columbia  
V0J 1J0

**SITE PLAN MAP  
K30-001-R01-05  
Amendment**

**LEGEND**

- Boundaries & Grids**
  - UTM Coordinate Grid
  - Cadastral Boundaries
  - Dunster Community Forest Boundary
- Topographic Features (TRIM)**
  - Contours - Index
  - Contours - Intermediate
- Hydrographic Features (TRIM)**
  - Stream - Definite
  - Stream - Indefinite
  - Stream - Wide
- Transportation Features (Digital Road Atlas)**
  - Paved Surface Road
  - Loose Surface Road
  - Rough Surface Road
  - Overgrown Surface Road
  - C.N. Railway
- Forestry Features**
  - DCF R Blocks
  - DCF WTP
  - R-Road Mainline
  - R- Road Spurs
  - Culvert - 450x8m CMP
  - Culvert - 600x8m CMP

**Scale=1:10,000**  
Mag.Decl. = 16°57'E  
UTM zone 11  
NAD83



**SITE PLAN MAP: K30-001-R01-05 Amendment**

Block Number	SU	Harvest Method	Gross Area (TAUP)	Reserves (WTP)	Harvest Area	Roads (P.A.S.)	Net Area Reforested (N.A.R.)
R01	A	CC w/ Reserves	10.4 Ha	4.0 Ha	6.4 Ha	0.78 Ha	5.62 Ha
R02	A	CC w/ Reserves	5.5 Ha	0 Ha	5.5 Ha	0.29 Ha	5.21 Ha
R03	A	CC w/ Reserves	11.0 Ha	0 Ha	11.0 Ha	0.43 Ha	10.57 Ha
R04	A	CC w/ Reserves	10.7 Ha	0 Ha	10.7 Ha	1.04 Ha	9.66 Ha
R05	A	CC w/ Reserves	5.3 Ha	2.9 Ha	2.4 Ha	0.19 Ha	2.21 Ha

Mapping/GIS:  
**Evan Williams**  
 P.O. Box 8  
 McBride, BC, V0J 2E0  
 evanw.mus@gmail.com

**DATE: October 4, 2015**  
**MAP NO: DCFS-R01-05-A1**